



# BROCHURE

SINCERITY • REPUTATION • BE ENTERPRISING • WIN-WIN

Address: Liaohe Road, Ningjin, Shandong, 253400, China

Tel: 86-15653401606

Fax: 86-534-7073768

Email: [jade@sdxxhg.com](mailto:jade@sdxxhg.com)

Web: [en.sdxxhg.com](http://en.sdxxhg.com)

**Shandong Ningjin Xinxing Chemical Co., Ltd.**



## Company Profile

- + 30 years old manufacturer
- 3 large production plants
- 20 years exporting experience



Shandong Ningjin County Xinxing Chemical Co., Ltd. covers an area of 48,000 square meters, with a registered capital of 10 million yuan and 200 employees. Since its establishment, the company has been focusing on the field of engineering plastics production in China. XINXING has its own engineering plastics R&D and production team, specializing in the production of UHMWPE Sheet and rods also processing parts HDPE Sheet, HDPE rod, HDPE parts, Crane outrigger pads , Ground protection mats, synthetic ice, dasher board, PP sheet, PVC sheets, shooting pads and other plastic products.

Our Products are widely exported to Korea, Japan, Southeast Asia, India, Russia, Europe, America, Australia and other countries and areas.

XINXING has a history of 30 years in manufacturing engineering plastic products. Our main factory is

high quality, temporary plastic ground protection solutions.

XINXING ground mats are suitable across a wide spectrum of industries including:

Construction / civil engineering / military / drilling / landscaping / sports field maintenance / events / holiday home parks / heritage sites and more.

XINXING provide all kinds of ground solutions to customer, which contains Duramat, Quickmat, Basemat and Amphimat, which was customized according to different events and condition. When you want to establish a safety work area in Oil & Gas field, Swamp, poor ground conditions or other sites that needs to load heavy equipment, you need our Duramat / Amphimat / Basemat; When you want to protect the grass, artificial turf or others items which needs to establish a temporary access for light weight equipment, we recommend Quickmat for you...

### **QuickMat** (Hdpe extruded ground mat) — Common size and details:

Item No.	Size (mm)	Core Thickness (mm)	Weight (kg)	Effective area(m <sup>2</sup> )	Loading capacity (ton)	Loading container & calculate
<b>XE01</b>	2000 x 1000 x 10	10	22.6	2.00	30	590 pcs in 20* GP 1150 pcs in 40, GP
<b>XE02</b>	2400x1200x12.7	12.7	40	2.88	40	320 pcs in 20' GP 580 pcs in 40' GP
<b>XE03</b>	2440 x 1220 x 12.7	12.7	42	2.98	40	300 pcs in 20* GP 550 pcs in 40' GP
<b>XE04</b>	2900 x 1100 x 12.7	12.7	45	3.20	40	350 pcs in 20* GP 580 pcs in 40' GP
<b>XE05</b>	3000 x 1500 x 15	15	74	4.50	80	320 pcs in 40* GP

**Remark:**

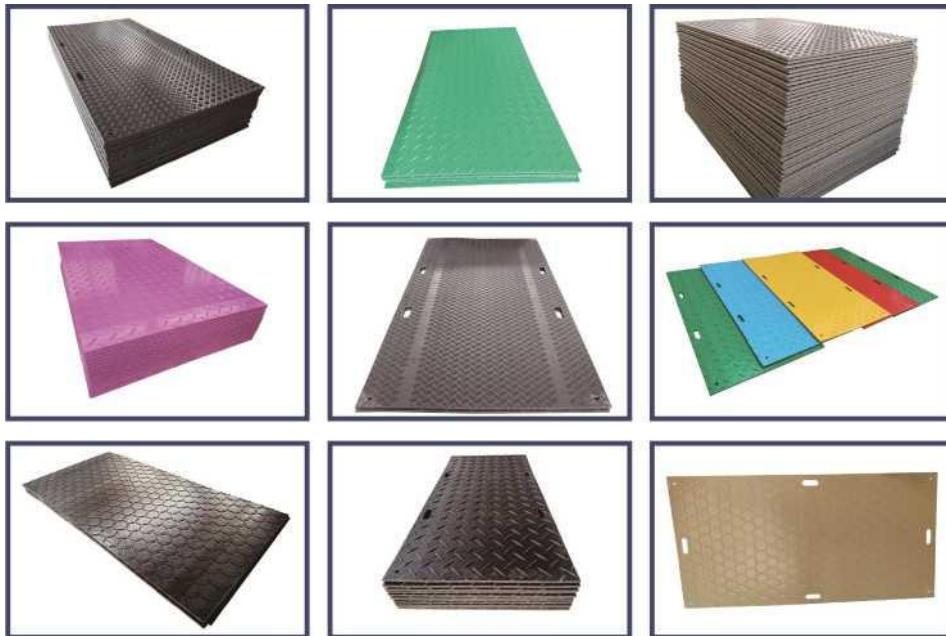
- Material: Virgin HDPE (high-density polyethylene)
- For wheeled vehicle
- Recommend thickness: 10 mm, 12.7mm, 15 mm, 18 mm, 20 mm and 25mm.
- Colour: white, black, red, yellow, blue and etc

Surface

A Walkway	B Trackway	C Trackway	D Trackway	E Flat

- Type A (walkway) suitable for pedestrian/wheel chair
- Type B / C / D (trackway) suitable for vehicle/truck
- Type E is flat, No bump
- \*Any two type can be combined

Product pictures:



Connection system:



All steel parts was hot galvanizing.

Application:

Car park, Big events, Grass protection, construction site etc.



**BaseMat** (Hdpe extruded ground mat)

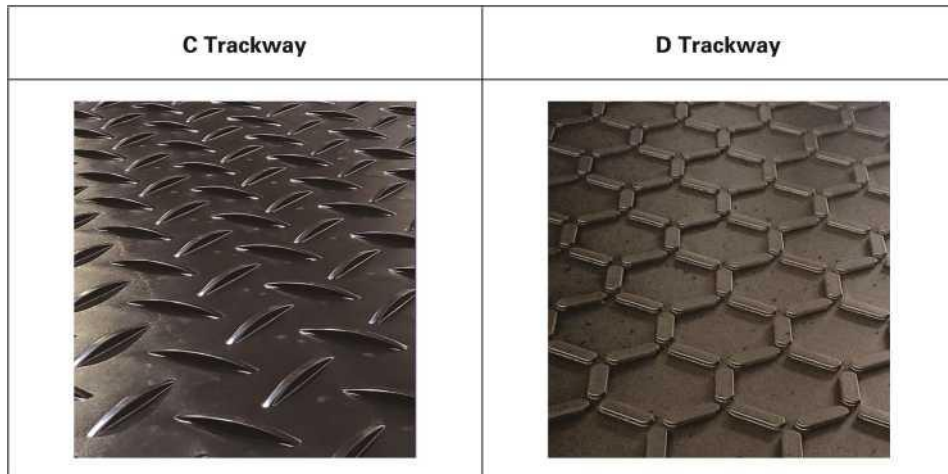
Common size and details:

Item No.	Size (mm)	Thickness with texture (mm)	Weight (kg)	Effective area(m <sup>2</sup> )	Loading capacity (ton)	Loading container & calculate
XE03	5900 x 2000 x 28	38	345	11.8	120	76 pcs in 40* HQ

Remark

- Material: HDPE (high-density polyethylene)
- Color: black
- Pattern thickness on every side is 5 mm.

Surface

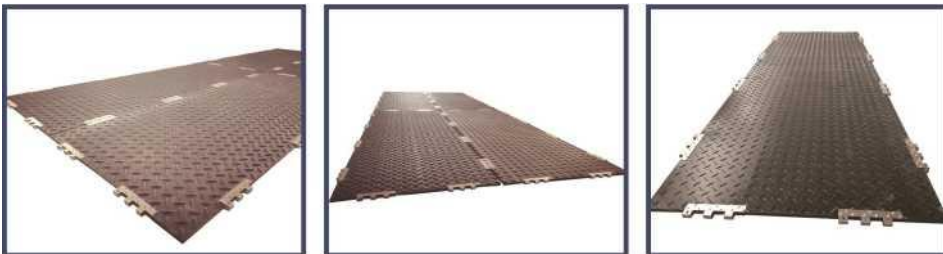


- Type C is for vehicles/trucks

— Type D can be both for pedestrian and trucks

-Customer can choose type CC, type DD or either with one side flat

Product pictures:



Connection system:



— Application:

Big events, construction site, golf courses/ tree care and other big work area etc.



**Dura Mat** (Composite pressed ground mat)

— Common size and details:

Item No.	Size (mm)	Thickness with texture (mm)	Weight (kg)	Effective area(m <sup>2</sup> )	Loading capacity (ton)	Loading container & calculate
XP01	3000 x 2500 x 38	48	293	7.5	120	78 pcs in 40' GP
XP02	4500 x 2000 x 38	48	351	9.0	120	70 pcs in 40' GP
XP03	6000 X 2000 X 40	50	492	12	200	60 pcs in 45 HQ
XP04	3000 x 2500 x 25	34	195	7.5	120	126 pcs in 40* GP

**Remark:**

-Material: composite Uhmwpe (Ultrahigh molecular weight polyethylene)

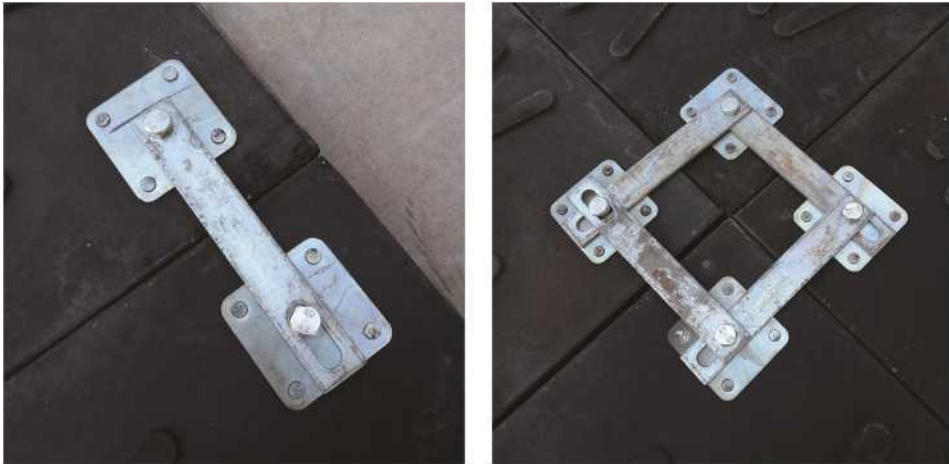
-For tracked vehicle

-Standard colour - black, other colors can be customized by order quantity.

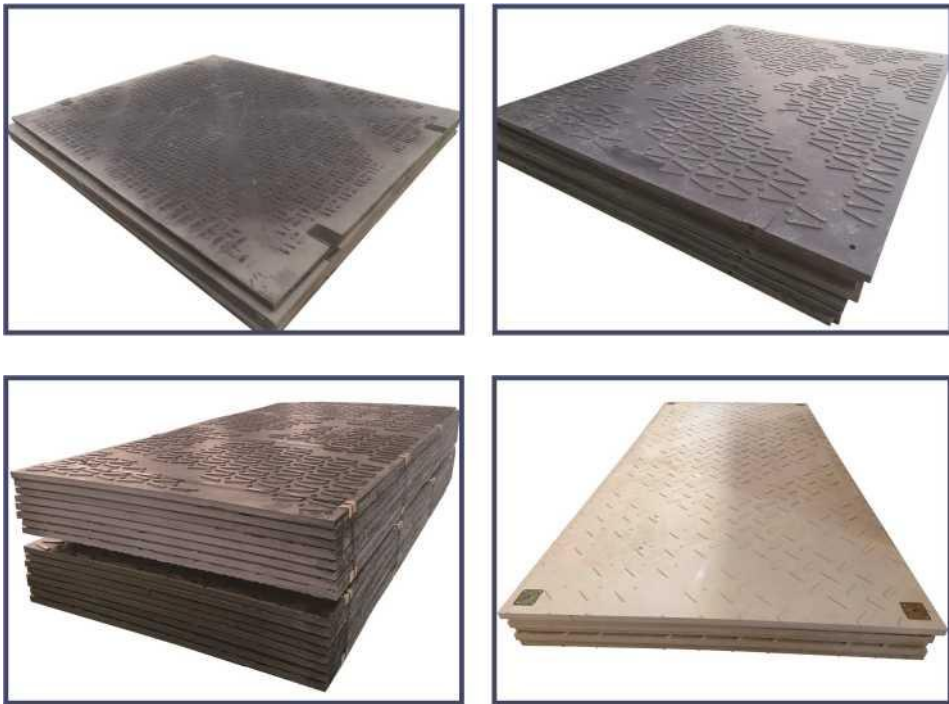
Surface:



Connection system:



Products Pictures:



Application:

Bit events, Oil and gas, construction site, utilities, pipeline construction, general construction, military, heavy haul etc.



### Amphi Mat (Special hollow heavy duty ground mat) — Common size and details:

Item No.	Size (mm)	Thickness with texture (mm)	Weight (kg)	Effective area(m <sup>2</sup> )	Loading capacity (ton)	Loading container & calculate
AmphiMat-1	5980x2180x80	88	620	12.0	120	42pcs in 40' HQ
AmphiMat-2	4270X2180 X80	88	435	8.0	120	42pcs in 40 HQ

**Remark:**  
 -Material: composite polyethylene  
 -For all type vehicle  
 -Color: black



### Connection System:



### Product Pictures:



### Application:

Bit events, Oil and gas, construction site, utilities, pipeline construction, general construction, military, heavy haul etc.



### Crane Outrigger Mat(UHMWPE material)

#### — Common size and details:

XINXING Crane Mat can be used not only as crane leg pads, but also the trailer plates, sleeper of heavy machinery track mats of heavy trucks. The pads are strong and solid designed to support your crane.

Crane Cribbing pad put under the support-leg of Truck Crane, Crawler Crane, Rough Crane, Boom Pump, Concrete Pump, Fire Truck, Utility Truck, Tree Trimmer, Any Type Of Aerial Equipment and so on. for making the machine work safely!

#### — Common surface

Circle recess Groove	X-groove Surface	Safety Grind	Customer Logo

#### — Shape Type

Square Shape Pad	Round Shape Pad	Long strip one

## 一 Loading Capacity

Thickness (mm)	Pad size (mm)	Part Number	45° Load (ton)	Vertical Load	Pad Weight
25mm Square	450x450	X1T45	14 tonnes	25 tonnes	5.00kgs
25mm Rectangle	500x600	X1T56	16 tonnes	27 tonnes	7.50kgs
25mm Square	600x600	X1T60	16 tonnes	24 tonnes	9.00kgs
25mm Square	760x760	X1T76	18 tonnes	36 tonnes	14.40kgs
25mm Square	900x900	X1T90	19 tonnes	42 tonnes	20.20kgs
25mm Square	1200x1200	X1T120	22.5 tonnes	59 tonnes	36.00kgs
25mm Round	760mm Dia	X1TR76	12 tonnes	28 tonnes	11,30kgs
25mm Round	900 Dia	X1TR90	15 tonnes	32 tonnes	15.90kgs
25mm Round	1200 Dia	X1TR120	18 tonnes	45 tonnes	28.26kgs
40mm Square	450x450	X1.5T45	14 tonnes	25 tonnes	8.10kgs
40mm Square	600x600	X1.5T60	16 tonnes	27 tonnes	14.40kgs
40mm Square	760x760	X1.5T76	19 tonnes	37 tonnes	23.1 Okgs
40mm Square	900x900	X1.5T90	20 tonnes	43 tonnes	32.40kgs
40mm Square	1200x1200	X1.5T120	23 tonnes	59 tonnes	57.60kgs
40mm Round	760 Dia	X1.5TR76	14 tonnes	28 tonnes	18.1 Okgs
40mm Round	900 Dia	X1.5TR90	15 tonnes	32 tonnes	25.40kgs
40mm Round	1200 Dia	X1.5TR120	18 tonnes	45 tonnes	45.20kgs
50mm Square	450x450	X2T45	14 tonnes	26 tonnes	10.12kgs
50mm Rectangle	500x600	X2T56	18 tonnes	28 tonnes	15.00kgs
50mm Square	600x600	X2T60	18 tonnes	28 tonnes	18.00kgs
50mm Square	760x760	X2T76	19.5 tonnes	38tonnes	28.80kgs
50mm Square	900x900	X2T90	20 tonnes	44 tonnes	40.50kgs
50mm Square	1200x1200	X2T120	25 tonnes	63 tonnes	72.00kgs
50mm Round	760 Dia	X2TR76	15 tonnes	30 tonnes	22.67kgs
50mm Round	900 Dia	X2TR90	16 tonnes	32 tonnes	31.80kgs
50mm Round	1200 Dia	X2TR120	19 tonnes	45 tonnes	56.52kgs
60mm Square	600x600	X2.5T60	17.5 tonnes	28 tonnes	21,60kgs
60mm Square	760x760	X2.5T76	19 tonnes	39 tonnes	34.66kgs
60mm Square	900x900	X2.5T90	20 tonnes	45 tonnes	48.60kgs
60mm Square	1200x1200	X2.5T120	24 tonnes	60 tonnes	86.40kgs
60mm Round	760 Dia	X2.5TR76	15 tonnes	29 tonnes	27.20kgs
60mm Round	900 Dia	X2.5TR90	15.3 tonnes	33 tonnes	38.15kgs
60mm Round	1200 Dia	X2.5TR120	19 tonnes	46 tonnes	67.82kgs

75mm Square	600x600	X3T60	18 tonnes	29 tonnes	27.00kgs
75mm Square	760x760	X3T76	20 tonnes	40 tonnes	43.32kgs
75mm Square	900x900	X3T90	22 tonnes	47 tonnes	60.75kgs
75mm Round	760 Dia	X3TR76	15 tonnes	30 tonnes	34.00 kgs
75mm Round	900 Dia	X3TR90	16 tonnes	36 tonnes	47.68kgs
75mm Round	1200Dia	X3TR120	20 tonnes	51 tonnes	84.78kgs

## 一 Application

Our UHMWPE crane outrigger pad put under the support-leg Truck Crane, Crawler Crane, Rough Crane, Boom Pump, Concrete Pump, Fire Truck, Utility Truck, Tree Trimmer, Any type of Aerial Equipment and so on, for making the machine work safely.

## Crane Outrigger Mat(UHMWPE material)

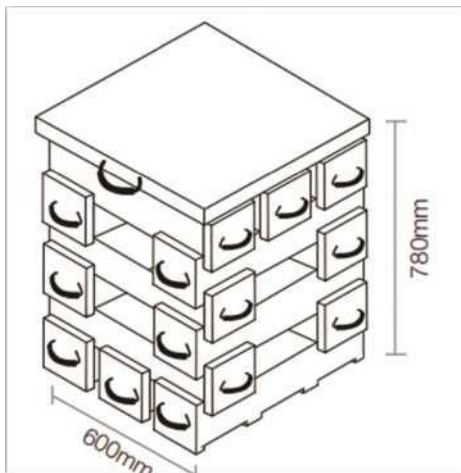
## 一 Common size and details:



## Cribbing blocks - INTERLOCKING STABILIZATION PRODUCTS

Our innovative cribbing block products are the safer alternative to wood during stabilization operations. XINXING cribbing blocks gives you the flexibility to stack and interlock plastic cribbing blocks for almost any type of load stabilization or application in industrial or fire/rescue settings, such as auto extrication.

**BLOCK DIMENSIONS: 600x150x150mm (10.50kgs) TOP SEALER PAD:  
600x600x (40-80mm) (14-28kgs)  
Loading weight up to 100 tons.**

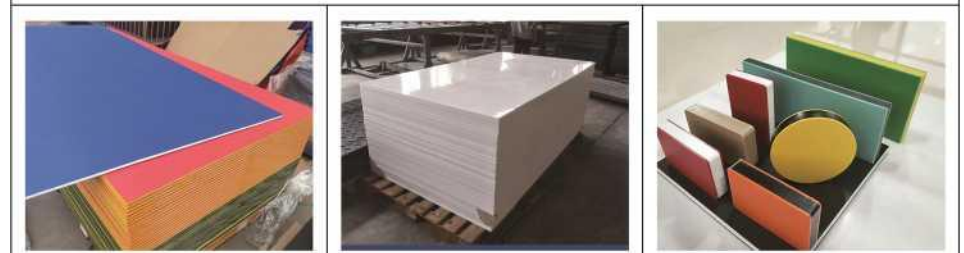


The cribbing block system is designed to support and stabilise heavy equipment during a lifting/lowering operation. It's compact size means you can quickly and safely build a temporary crib to the desired height, with the flexibility of two configuration options depending on the required load capacities. Come back to us with your detailed requirements.

**XINXING other products:**



UHMWPE SHEETS ( PE 9000, PE2000, PE1000, PE 500 grades)



HDPE Sheets ( single color, dual color, sandwich with peel texture surface)



UHMWPE and HDPE machined parts